

W.K. DALTON SURVEY
A-54

W.K. DALTON SURVEY
A-54

Bobby & Bettie Hollingsworth
011-73-2378
G.C.D.R.

CAPLEN YACHT BASIN
SUBDIVISION
VOL. 1 PG. 67 G.C.M.R.

UPLAND 1

r and Associates in
as established by
County of Galveston
the Texas State
to N.G.S.
727.05, E
expressed in U.S.

ny, Texas, according to
records in the Office of

together with
my direction, and that
states the facts as found



COASTAL SURVEYING OF TEXAS, INC.
GALVESTON OFFICE: 8017 HARBORSIDE DRIVE (physical), P.O. BOX 877 (mailing), GALVESTON, TX 77553
CRYSTAL BEACH OFFICE: 975 LAZY LANE WEST, P.O. BOX 2242 (mailing), CRYSTAL BEACH, TX 77650
ph (409) 740-1517 tx (409) 740-0377 ph (409) 884-8400 tx (409) 884-8112
WWW.SURVEYINGGALVESTON.COM

STATE HWY. No. 87
(120' R.O.W.)
N 66°34'33" E N68°15'30" E
189.74'

and Associates in
as established by
County of Galveston
the Texas State
to N.G.S.
727.05, E
expressed in U.S.

ny, Texas, according to
records in the Office of

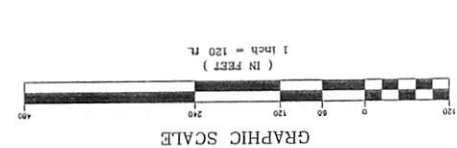
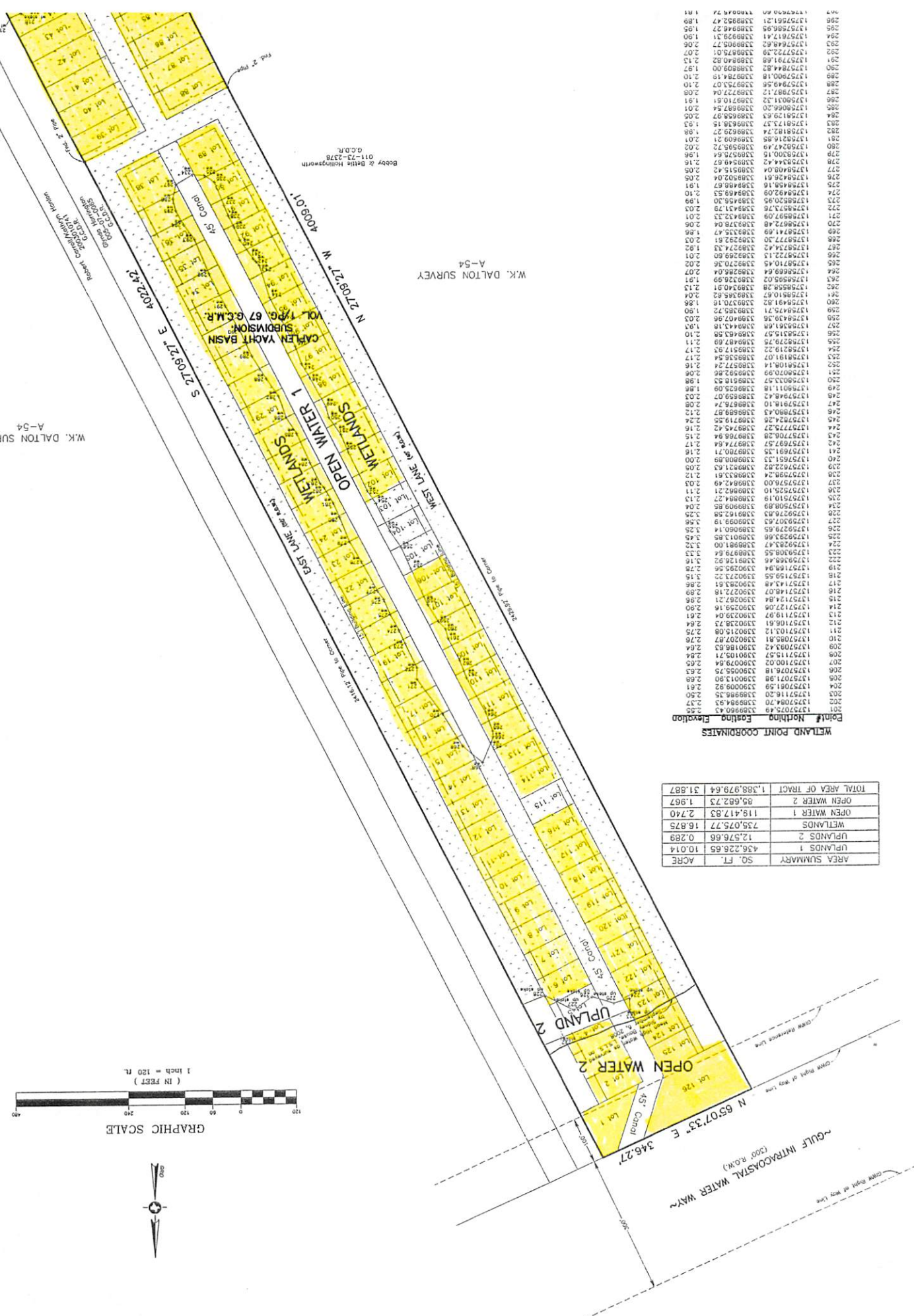
together with
my direction, and that
states the facts as found

COASTAL SURVEYING OF TEXAS, INC.
GALVESTON OFFICE: 8017 HARBORSIDE DRIVE (physical), P.O. BOX 877 (mailing), GALVESTON, TX 77553
CRYSTAL BEACH OFFICE: 975 LAZY LANE WEST, P.O. BOX 2242 (mailing), CRYSTAL BEACH, TX 77650
ph (409) 740-1517 tx (409) 740-0377 ph (409) 884-8400 tx (409) 884-8112
WWW.SURVEYINGGALVESTON.COM

AREA SUMMARY	SQ. FT.	ACRE
UPLANDS 1	436,226.65	10.014
UPLANDS 2	12,576.66	0.289
WETLANDS	735,075.77	16.875
OPEN WATER 1	119,417.83	2.740
OPEN WATER 2	85,682.73	1.967
TOTAL AREA OF TRACT	1,388,979.64	31.887

WETLAND POINT COORDINATES
Point # Northing Easting Elevation

201	1375707.49	1389660.43	2.55
202	1375711.20	1389898.35	2.50
203	1375714.20	1389898.35	2.47
204	13757081.59	1390009.92	2.61
205	13757071.98	1390013.90	2.69
206	13757100.02	1390029.64	2.65
207	13757100.02	1390029.64	2.65
208	13757115.57	1390105.71	2.84
209	13757093.42	1390186.83	2.64
210	13757085.81	1390207.87	2.76
211	13757101.12	1390215.08	2.75
212	13757106.61	1390238.73	2.64
213	13757119.07	1390239.04	2.61
214	13757124.84	1390267.21	2.90
215	13757124.84	1390267.21	2.96
216	13757124.84	1390267.21	2.96
217	13757143.48	1390283.61	2.86
218	13757159.55	1390293.22	3.15
219	13757164.94	1390299.56	2.78
220	13757164.94	1390299.56	2.78
221	13757164.94	1390299.56	2.78
222	13757164.94	1390299.56	2.78
223	13757164.94	1390299.56	2.78
224	13757164.94	1390299.56	2.78
225	13757278.66	1390801.89	3.45
226	13757278.66	1390801.89	3.45
227	13757307.63	1390909.19	3.56
228	13757307.63	1390909.19	3.56
229	13757325.10	1390963.21	3.03
230	13757325.10	1390963.21	3.03
231	13757325.10	1390963.21	3.03
232	13757325.10	1390963.21	3.03
233	13757325.10	1390963.21	3.03
234	13757325.10	1390963.21	3.03
235	13757325.10	1390963.21	3.03
236	13757325.10	1390963.21	3.03
237	13757325.10	1390963.21	3.03
238	13757325.10	1390963.21	3.03
239	13757325.10	1390963.21	3.03
240	13757325.10	1390963.21	3.03
241	13757325.10	1390963.21	3.03
242	13757325.10	1390963.21	3.03
243	13757325.10	1390963.21	3.03
244	13757325.10	1390963.21	3.03
245	13757325.10	1390963.21	3.03
246	13757325.10	1390963.21	3.03
247	13757325.10	1390963.21	3.03
248	13757325.10	1390963.21	3.03
249	13757325.10	1390963.21	3.03
250	13757325.10	1390963.21	3.03
251	13757325.10	1390963.21	3.03
252	13757325.10	1390963.21	3.03
253	13757325.10	1390963.21	3.03
254	13757325.10	1390963.21	3.03
255	13757325.10	1390963.21	3.03
256	13757325.10	1390963.21	3.03
257	13757325.10	1390963.21	3.03
258	13757325.10	1390963.21	3.03
259	13757325.10	1390963.21	3.03
260	13757325.10	1390963.21	3.03
261	13757325.10	1390963.21	3.03
262	13757325.10	1390963.21	3.03
263	13757325.10	1390963.21	3.03
264	13757325.10	1390963.21	3.03
265	13757325.10	1390963.21	3.03
266	13757325.10	1390963.21	3.03
267	13757325.10	1390963.21	3.03
268	13757325.10	1390963.21	3.03
269	13757325.10	1390963.21	3.03
270	13757325.10	1390963.21	3.03
271	13757325.10	1390963.21	3.03
272	13757325.10	1390963.21	3.03
273	13757325.10	1390963.21	3.03
274	13757325.10	1390963.21	3.03
275	13757325.10	1390963.21	3.03
276	13757325.10	1390963.21	3.03
277	13757325.10	1390963.21	3.03
278	13757325.10	1390963.21	3.03
279	13757325.10	1390963.21	3.03
280	13757325.10	1390963.21	3.03
281	13757325.10	1390963.21	3.03
282	13757325.10	1390963.21	3.03
283	13757325.10	1390963.21	3.03
284	13757325.10	1390963.21	3.03
285	13757325.10	1390963.21	3.03
286	13757325.10	1390963.21	3.03
287	13757325.10	1390963.21	3.03
288	13757325.10	1390963.21	3.03
289	13757325.10	1390963.21	3.03
290	13757325.10	1390963.21	3.03
291	13757325.10	1390963.21	3.03
292	13757325.10	1390963.21	3.03
293	13757325.10	1390963.21	3.03
294	13757325.10	1390963.21	3.03
295	13757325.10	1390963.21	3.03
296	13757325.10	1390963.21	3.03
297	13757325.10	1390963.21	3.03
298	13757325.10	1390963.21	3.03
299	13757325.10	1390963.21	3.03
300	13757325.10	1390963.21	3.03



W.K. DALTON SURVEY
A-54

W.K. DALTON SURVEY
A-54

Bobby & Della Hollingsworth
O.C.D.R.
011-2378